



# Town of Wakefield, New Hampshire

## Heritage Commission

2 High Street  
Wakefield NH 03872 USA  
[info@historicwakefieldnh.com](mailto:info@historicwakefieldnh.com)

### FINAL Heritage Commission Minutes

October 7, 2019

Members		Alternates		Others	
Pam Wiggin	X	Nancy Britton	X		
Rick Poore	X	Ann Bell	X		
Phil Twombly	X	Tracey Kolb			
Connie Twombly	X	Jeanne Loughan	X		
Carroll (Snooky) Shea	X				
Nancy Hall	X				
Mark Duffy	X				

Meeting Called to order at: 7:01pm      By: Pam Wiggin

- Started Meeting with the Pledge of Allegiance
- Financials: Fund 1 was Reviewed, no questions arose. Fund 4 Balance \$113,325.06 was emailed to Pam from Michelle on Friday. Received a total of \$367.00 in deposits in September. \$254 was from donations, \$86 from T-Shirt sales, and \$27 from Museum sales
- Correspondence: Pam received 2 letters in the mail. One was from the National Trust for Historic Preservation asking if we want to renew our membership for \$90 or \$45. Phil motioned to support the \$45 to the National Trust for Historic Preservation. Snookie 2<sup>nd</sup> the motion. All in favor, unanimous. The second correspondence was from the Congregational Church. The pastor sent a letter apologizing for not inviting us to the traffic calming device meetings.
- Minutes: Reviewed the minutes from 9/3/19, Pam motioned to approve the minutes, 2<sup>nd</sup> by Rick to approve. Mark abstained. Reviewed the minutes from 9/12/19, Phil motioned to approve the minutes, 2<sup>nd</sup> by Connie to approve. Mark and Nancy Hall abstained. Reviewed the minutes from 9/19/19, Nancy Hall motioned to approve the minutes, 2<sup>nd</sup> by Rick to approve. Connie, Snookie, and Mark abstained
- Warrants: Received two bills for warrant to sign, the first was the bill for the 2 trees to be removed at EWS from Royle Tree for \$2,200.00. The second bill was for \$7.20 to Long Meadow.



## Town of Wakefield, New Hampshire Heritage Commission

2 High Street  
Wakefield NH 03872 USA  
[info@historicwakefieldnh.com](mailto:info@historicwakefieldnh.com)

- CLG Update: Archeologists have been on site several times. They discovered the area the WHC proposed as subject of the grant is greater than the actual leased area according to the Wakefield Tax Map. Pam called DHR in Concord and has written permission from the state to survey the entire area as long as we do not go over budget. A meeting of all relevant parties regarding the TTP lease will be set up in Concord. Pam sent dates she and Kelley could attend. Pam received past history in securing the lease and details on the land secured from NH North Coast. Discussion ensued regarding lease of purchase. Mark will review at the Selectman's meeting.
- Framing/Exhibits/Archive: Cleaning up the Heritage. Working to set up Hazel MacBrian nursery school exhibit. Pam and Rick purchased a Milton Union poster from 1860 announcing the 1<sup>st</sup> scheduled class for Milton Union 3 Ponds Village High School. Going to add it to the EWS, Rick and Pam are donating it to the Heritage Commission.
- W-B Historical Society Program Oct. 8, 7pm Pam and Rick will be doing a presentation on the Heritage Commission. All are welcome to join.
- EWS-Clean out is in the works. So far 2 trees have been removed from the property from Royle Tree. On Saturday the 12<sup>th</sup> at 9am we will be cleaning out the backroom of EWS to turn it into a research space. Just received more EWS magnets to sell to anyone interested. Jeanne and Ann were thanked for all their help as docents at the EWS.
- Heritage Park Saturday November 30<sup>th</sup> will be the Tour de Chooch open house. A group of model train enthusiasts meet and visit all over New England. The station will be open along with the Freight house to come view. Phil needs helpers that day. Nancy Britton will check her schedule to see if she can help. Phil will be checking with Elaine to see if she can help. Snooky will help that day. Phil would like to purchase cider donuts and cider for the day. Nancy Britton is going to call Hannaford to see if they would be willing to donate some cider donuts and hot cider for the event. Phil believes he will need 4 gallons of cider, a pack of mulling spices, and as many donuts as we can get.
- Flashing speed lights in HD update: Mark spoke with Charlie who met with the state. They are going to install the speed signs in HD. One after Nancy Spencer Smith's and one near the brick schoolhouse to see if it makes a difference with people speeding. Police did a patrol and got more than ~30 people so far within just a few weeks. Connie asked if the state or local police will be setting the signs. Mark said he will find out for us.
- Turntable Park Fencing: Received a proposal for 104ft of industrial quality steel Fencing that looks like black wrought iron. Proposal for fence was for a 5ft high 3in heavy post in concrete \$8,100 from AAA fences. Need permission from the



## Town of Wakefield, New Hampshire Heritage Commission

2 High Street  
Wakefield NH 03872 USA  
[info@historicwakefieldnh.com](mailto:info@historicwakefieldnh.com)

selectmen once we are ready to move forward. Looking to start the project in the spring and use current funds, donations, and fundraising money to pay for it. Phil said since we already have donations for the fence so we should do it. Pam said it would be a nice thing for us to do for the Town. Phil asked what style of fence? Pam noted we will need multiple quotes due to the dollar amount since it is over \$5,000. Phil asked if only approving the project not spend? Pam confirmed. Phil motioned to approve 104ft of fence for now, Snooky 2<sup>nd</sup> the motion. In Discussion; Forming a Fundraising Committee. Nancy Britton said she would chair if the Selectmen approve the project. Mark will try on Wednesday in the meeting for the selectmen to approve the project. All in favor, All, passed unanimously.

- HD Fence Guidelines: Ann explained fencing information on fencing guidelines. Tracey and Ann put guidelines together. Requested changes, adding chain link to the last guideline. "Chain link dog pens will be considered on a case by case basis." Pam motioned to make it easier on property owners. Second, all in favor. Pam requested to have that guideline changed to "After discussion with the WHC, the WHC may allow fencing to be installed without a public hearing if the guidelines are followed." Phil motioned to approve the fencing guidelines with corrections. Rick 2<sup>nd</sup> the motion. All in favor, unanimous.
- HD Guidelines: Reviewed and made corrections to the WHC HD present Guidelines. Connie motioned to approve the corrections, 2<sup>nd</sup> by Nancy Hall. Discussion did not occur. All in favor, unanimous. Corrected guidelines will be uploaded to WHC website.
- Garvin Building Guidelines: Qualifies for the National Register status under 1- Retains integrity/style and 2-Importance of the person who built/or had it built. The Garvin building isn't currently on the National Register. The building was sold with covenants requiring the owners to come to WHC to review/approve if they are looking to make an exterior change. Pam questioned to have the Garvin building follow the Dept of Interior Standards for the new owners? She did give the owners the Dept of Interior Standards. Phil asked how the Garvin building can be put on the National Register? Pam responded; owners need to submit a report of the Garvin building. Mark suggested we get legal advice before decision on guidelines and will get permission for Pam to talk with the town attorney.
- Other: Phil asked for helpers this Sunday at 10am to help move furniture, clean the floors, and paint the floors of the station before Tour de Chooch. Rick said he would help, Nancy Hall will help with sweeping and mopping.
- Connie motioned to adjourn the meeting, 2<sup>nd</sup> by Snooky.
- Meeting adjourned at 9:06pm

## FENCING GUIDELINES

The Historic District at Wakefield Corner is of the Federal Period (1780- 1830).

Fences are significant architectural features that should enhance the character of the house, streetscape and the Historic District. In the back of the houses they were more utilitarian as they were used to protect gardens or restrain livestock and other animals.

Existing now: wooden picket fencing, Greek Revival and Victorian updates, board and split rail fencing. All existing fencing is grandfathered and may be replaced in kind.

The following are the Wakefield Heritage Commission's guidelines for fencing to maintain the historic character of the Period.

All fencing must be Federal Period with clean simple lines. The best side of the fence will face out from the property.

Street or front yard: wood pickets 3 – 3 ½ inches wide with spacing no more than the width of the pickets. Height of fence 40 – 48 inches high. Posts to be of granite or wood.

Backyard: split rail fencing with 2, 3, or 4 rails; horizontal board fencing with 2, 3, or 4 boards; picket fencing same as front yard. Posts to be of granite or wood.

Dry laid stone walls are acceptable as traditional boundaries.

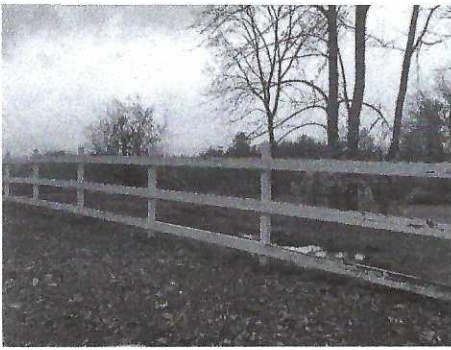
Gates: same design as adjoining fence or may be batten type.

Unacceptable styles: vinyl, chain link, masonry, stockade, lattice, basket weave, barbed wire, woven wire.

Chain link dog pens will be considered on a case by case basis.

After discussion with the Wakefield Heritage Commission, the Wakefield Heritage Commission may allow fencing to be installed without a public hearing if the guidelines are followed.

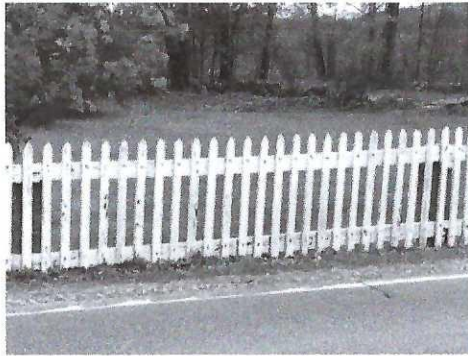




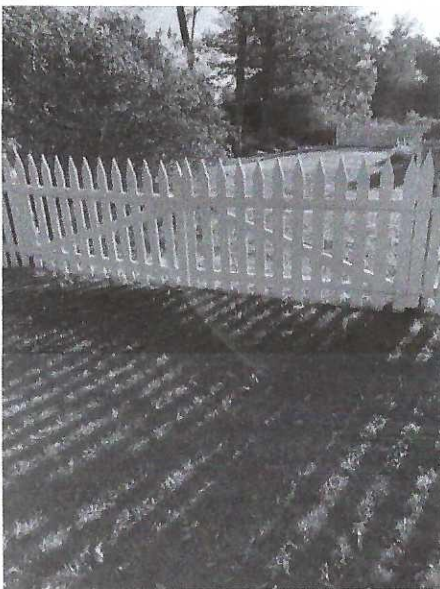
Two, three or four board fence in backyard



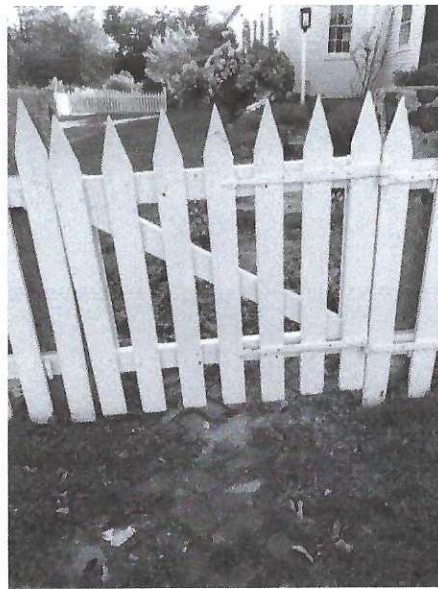
Split rail acceptable in backyard



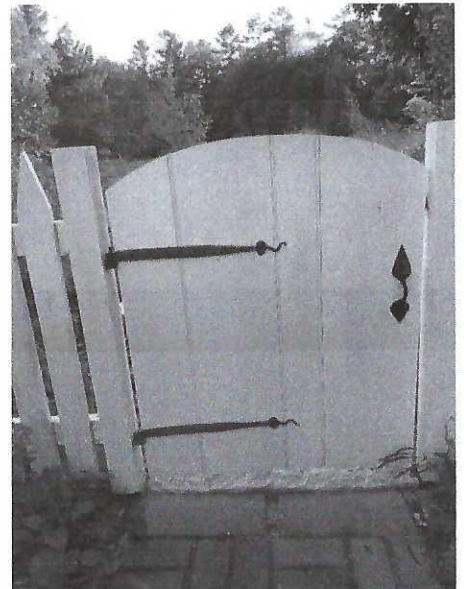
Picket fence only for street side. Acceptable anywhere



Double Picket Gate



Picket Gate



Batten Gate